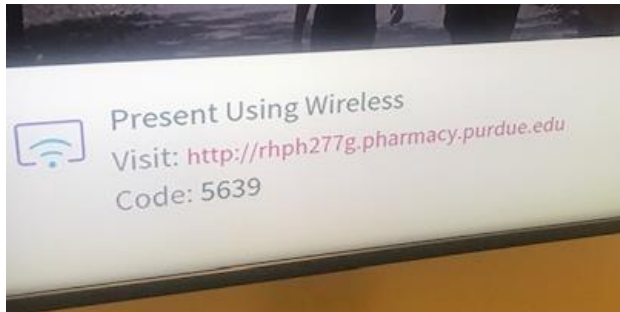


College of Pharmacy conference rooms are outfitted with both HDMI connections and wireless projection. We do not provide cables for the RHPH 277 conference rooms. If you need a cable, they are available for purchase from the vending machine. The systems will automatically detect if you have connected via HDMI and will display your image.

### Connecting to wireless projection with a PC

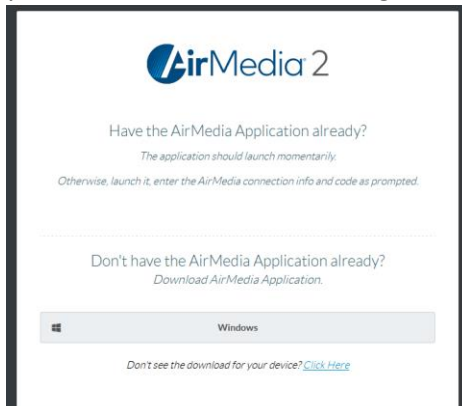
1: Open a web browser and navigate to the URL listed on the lower left of the monitor. **This URL is specific to the room you are in.**



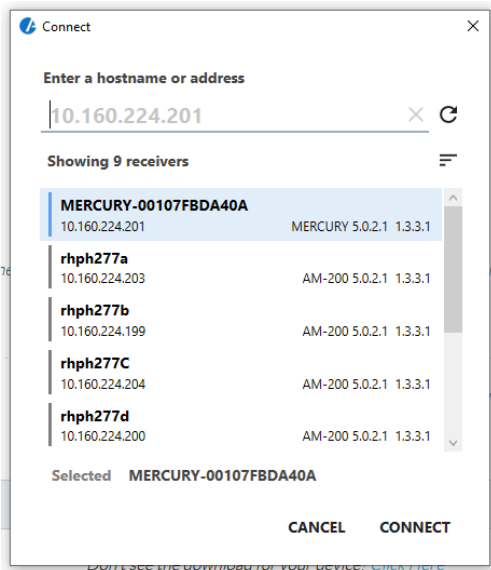
2: Click the "Start Presenting" button on the web page.



3: If you haven't installed the app, you may be presented with a download button. Click to download the app. Click your download to install it. When you first run the app, you may be prompted to make some firewall changes. If you have administrator rights on your machine, click to allow the changes. If you don't have administrator rights, don't allow the changes and the application will still work fine.



4: When the application launches, the URL information already be in the field. If it isn't, type the hostname or address into the field (the hostname is the URL without the HTTP://) and click connect.



5: For security, each time you connect, you will be prompted for a 4 digit pin. The pin will be random each time you try to connect and is displayed on the lower left of the monitor below the URL.

